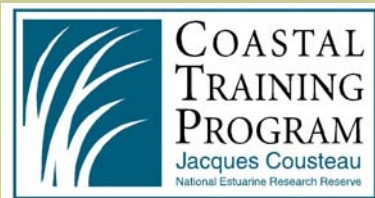


# Coastal Inundation Mapping

## GIS Training for Coastal Resource Professionals, Planners and Emergency Managers

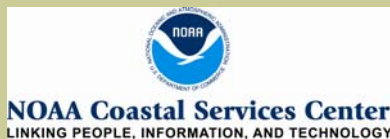
SPONSORED BY:



*"To improve management of New Jersey coastal environments through science, education and stewardship. "*



PRESENTED BY:



**Register Online at:**

<http://www.jcnerr.org/education/coastaltraining/>

Or

Call Lisa at  
609-812-0649 Ext. 204

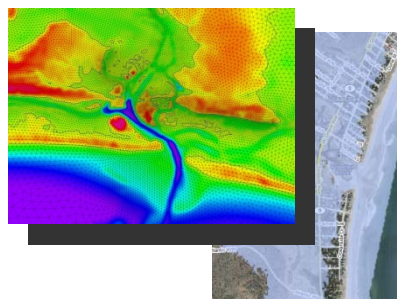
There is NO fee  
to register.

## Course Overview

Join us for this FREE two-day geo-spatial training course. The NOAA CSC instructors will deliver a combination of and hands-on exercises designed to give professionals a better understanding of coastal inundation issues and mapping methods using GIS.

Topics include:

- Different types of coastal inundation, elevation datasets and datums;
- Spatial methodologies used to map flood areas in New Jersey's coastal environment;
- The applications and limitations of various types of inundation products, and ;
- Exercises for assessing coastal risk using New Jersey data.



**Where:** JC NERR Coastal Center  
130 Great Bay Blvd., Tuckerton, NJ 08087

**When:** October 20 & 21, 2010  
9am—5pm

### Requirements:

The intended audience for this two-day course includes coastal resource professionals, certified floodplain managers, emergency managers, land use planners, and other state, county, and municipal officials and consultants.

**Class participants should have basic GIS skills  
(at least 6 months to 1 year GIS experience).**

*FREE Onsite, overnight accommodations can be provided on a first come, first served basis.*